

Installation Instructions

2 QT DEEP SUMP KIT

Follow the instructions below for proper installation of your new kit. Recommended professional installation.

KIT COMPONENTS:

2x Oil pickup tubes (part no. 997.107.016.00)

3x aluminum baffle spacers

1x aluminum baffle gasket

1x aluminum 2qt pan extension

1x aluminum pickup spacer

1x pickup spacer o-ring

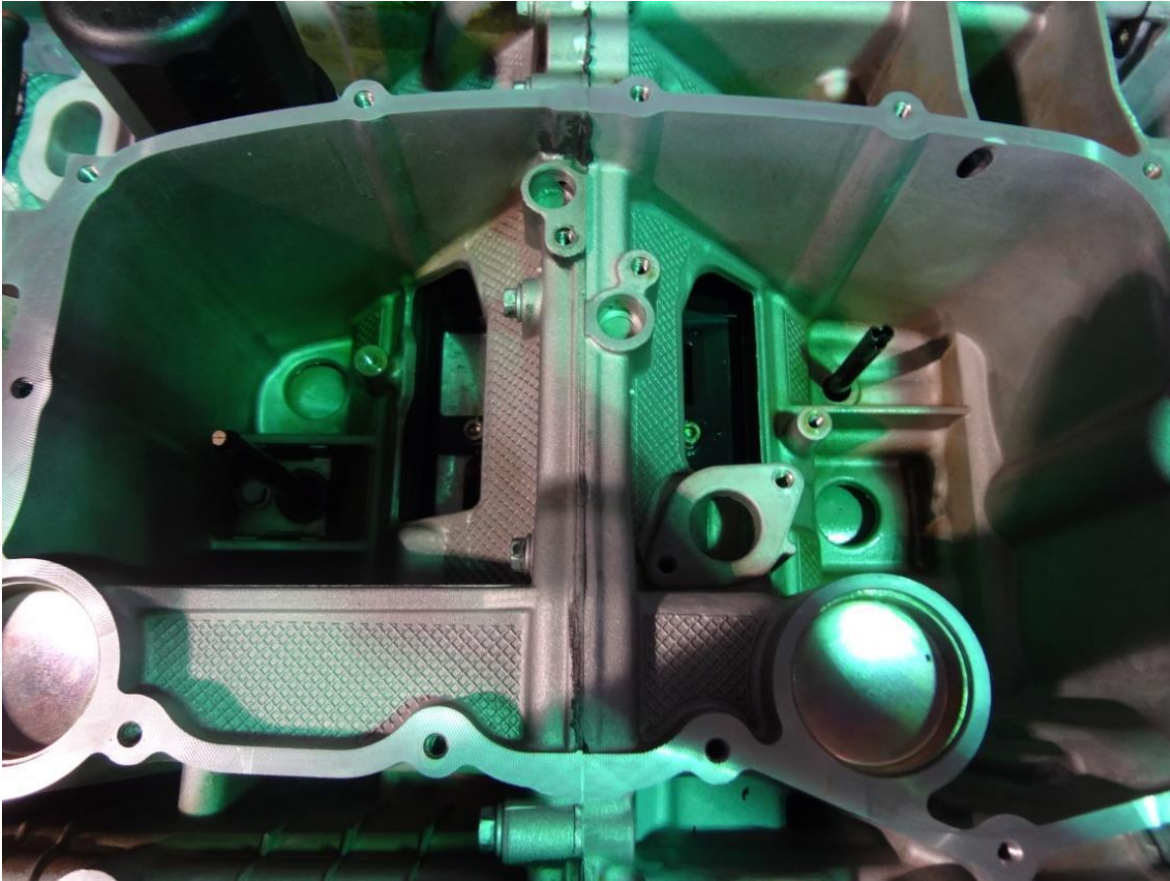
1x Reinzosil Universal Sealing Compound

15x hex head bolts

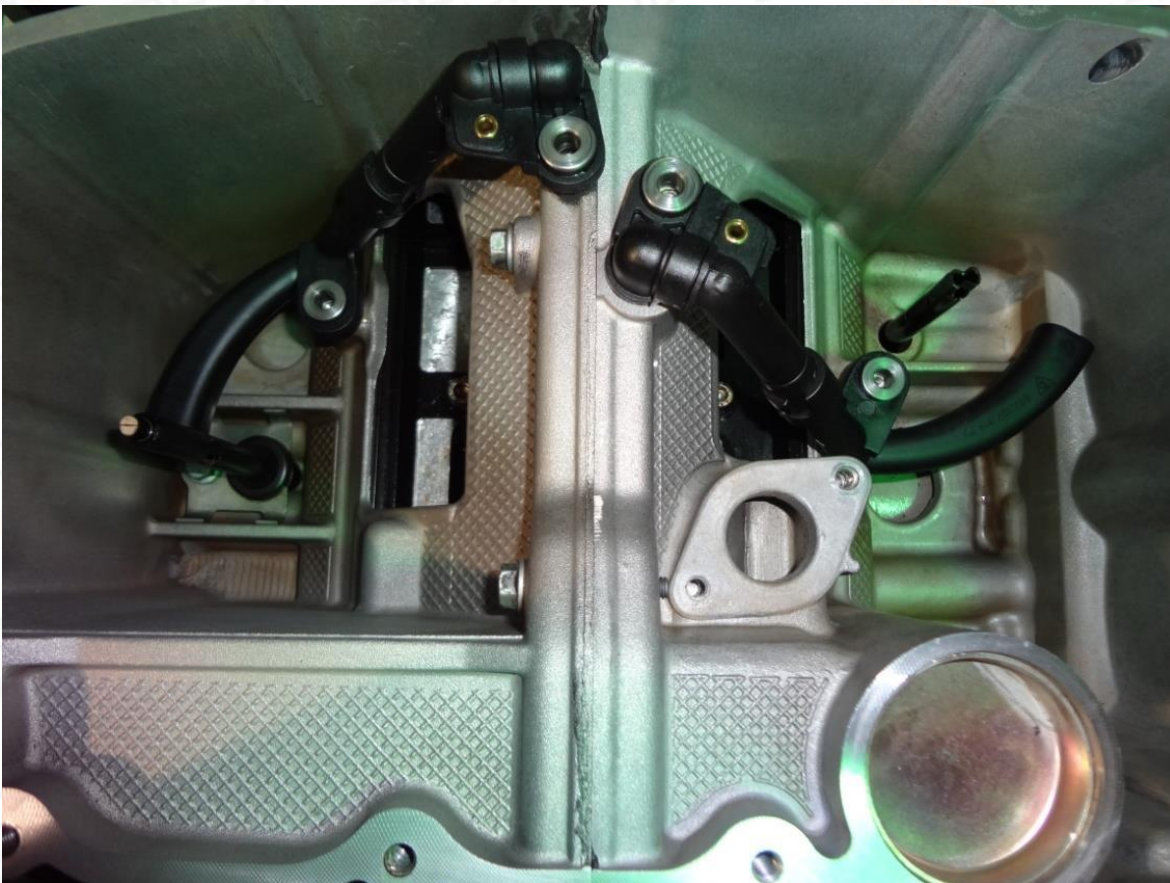
****These instructions begin after the oil pan and pickup tube have been removed from the vehicle.**

Step 1:

Remove oil pan, baffle and pickup tube.

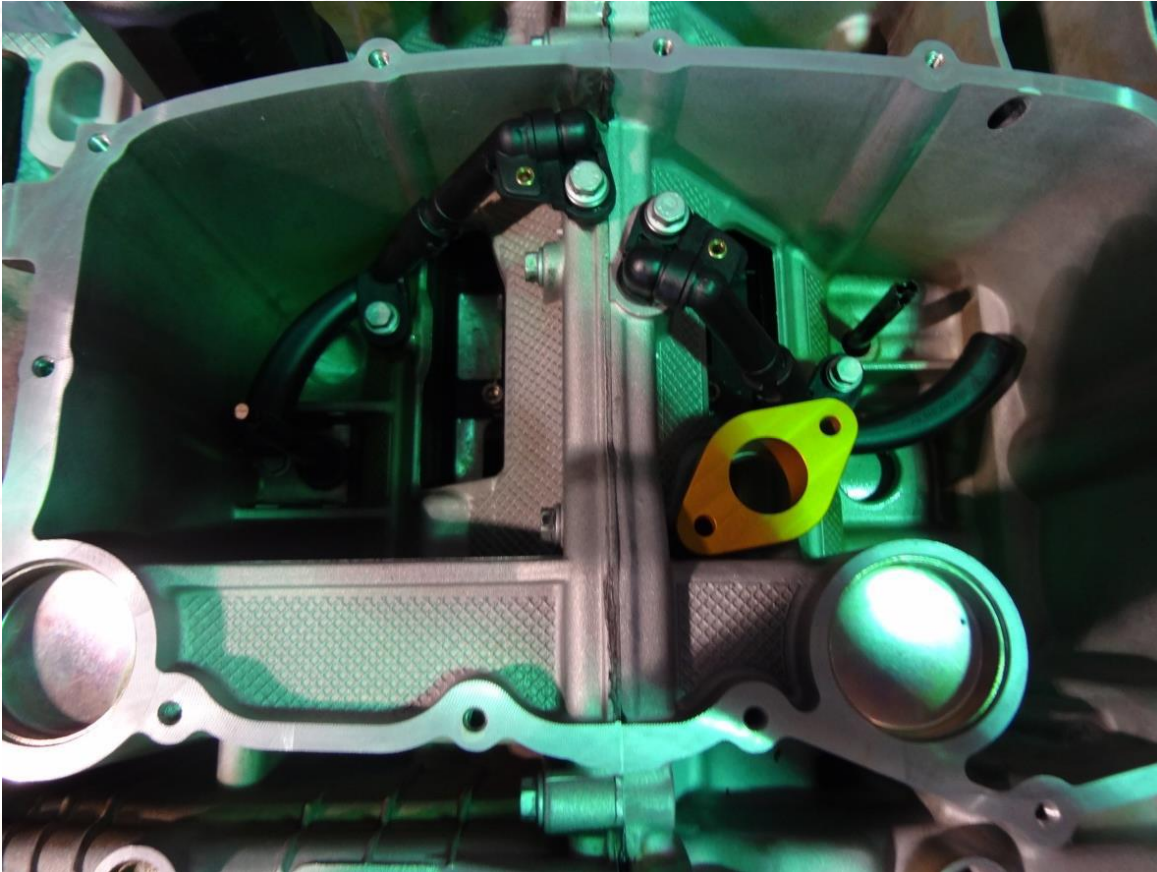
**Step 2:**

Install two (2) oil pickup tubes (part no 997.107.016.00) as shown below.



Step 3:

Install oil pickup tube aluminium spacer as shown below.

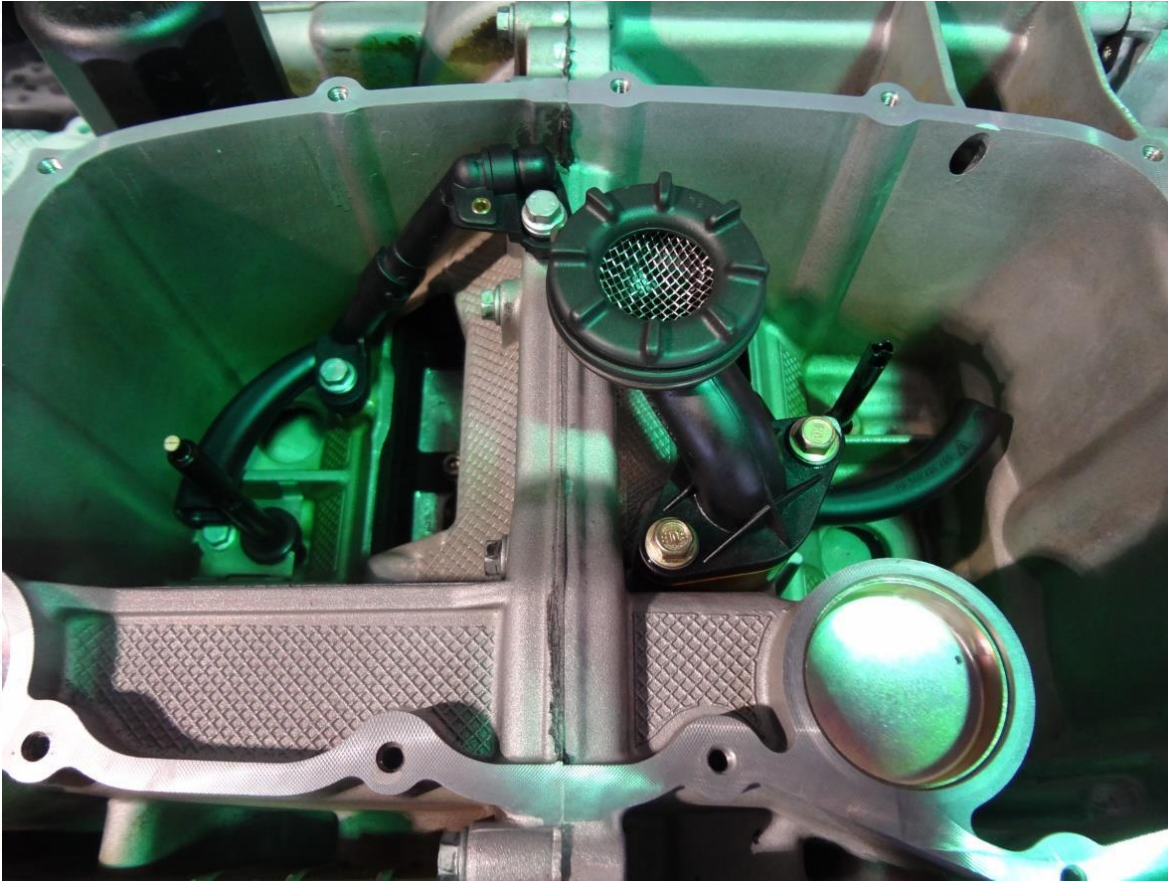


**Be sure you installed the supplied O-ring between the spacer and engine casting.



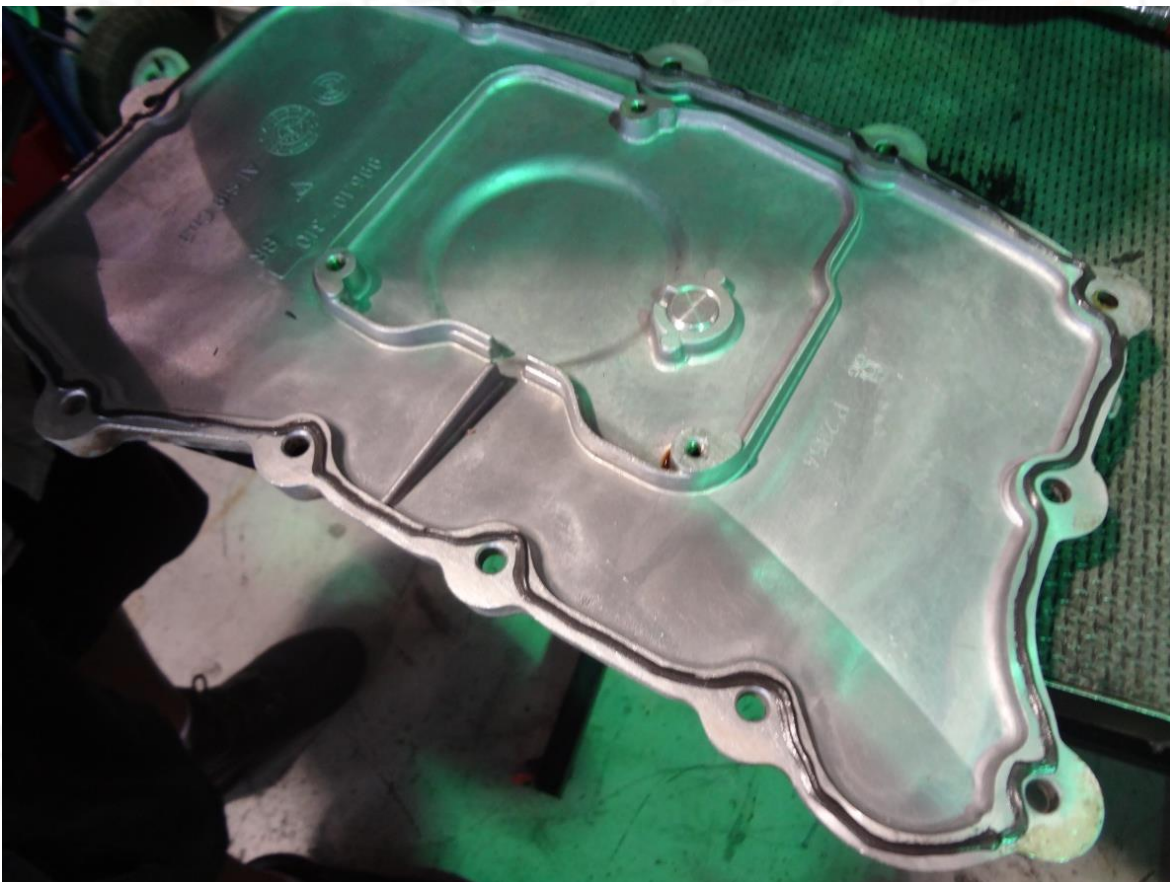
Step 4:

Install oil pickup return tube and bolt down using two of the supplied hex bolts.



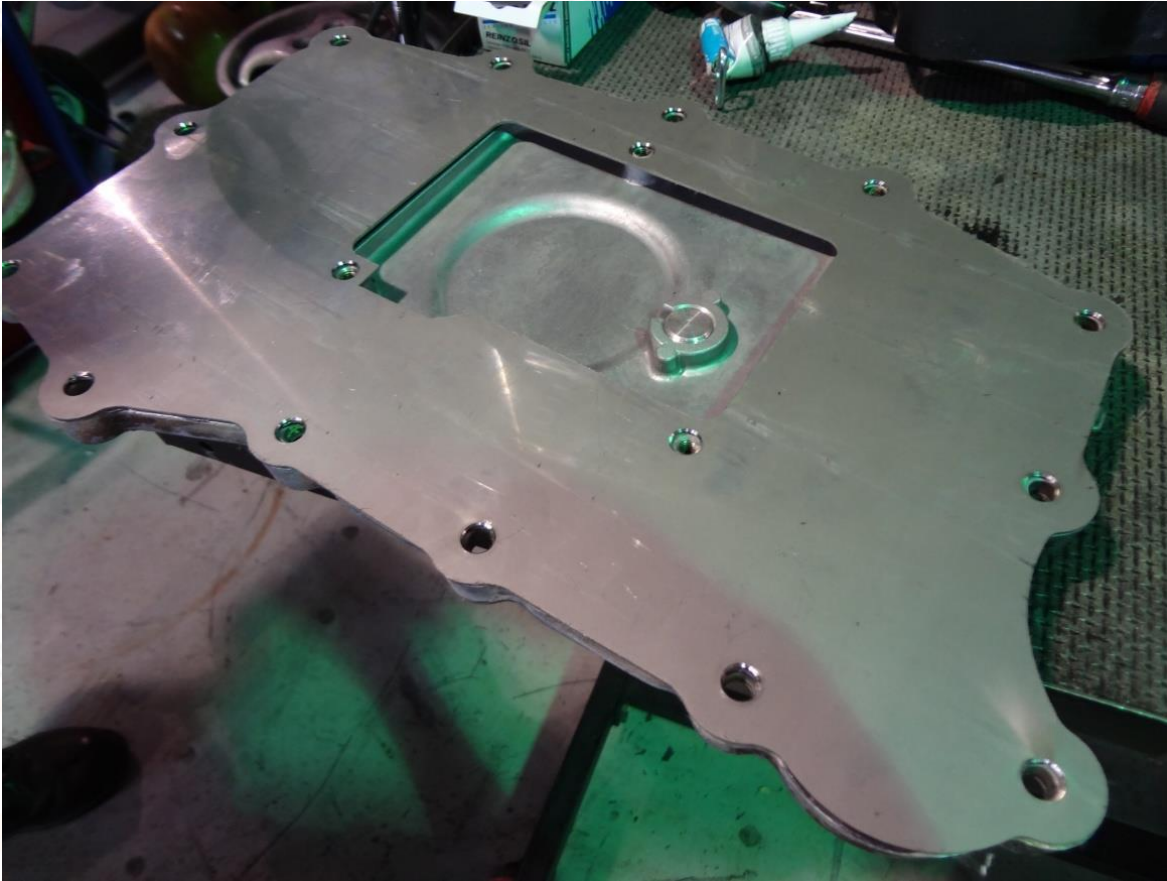
Step 5:

Using the provided Reinzosil sealant, apply to edge of oil pan (as shown below)

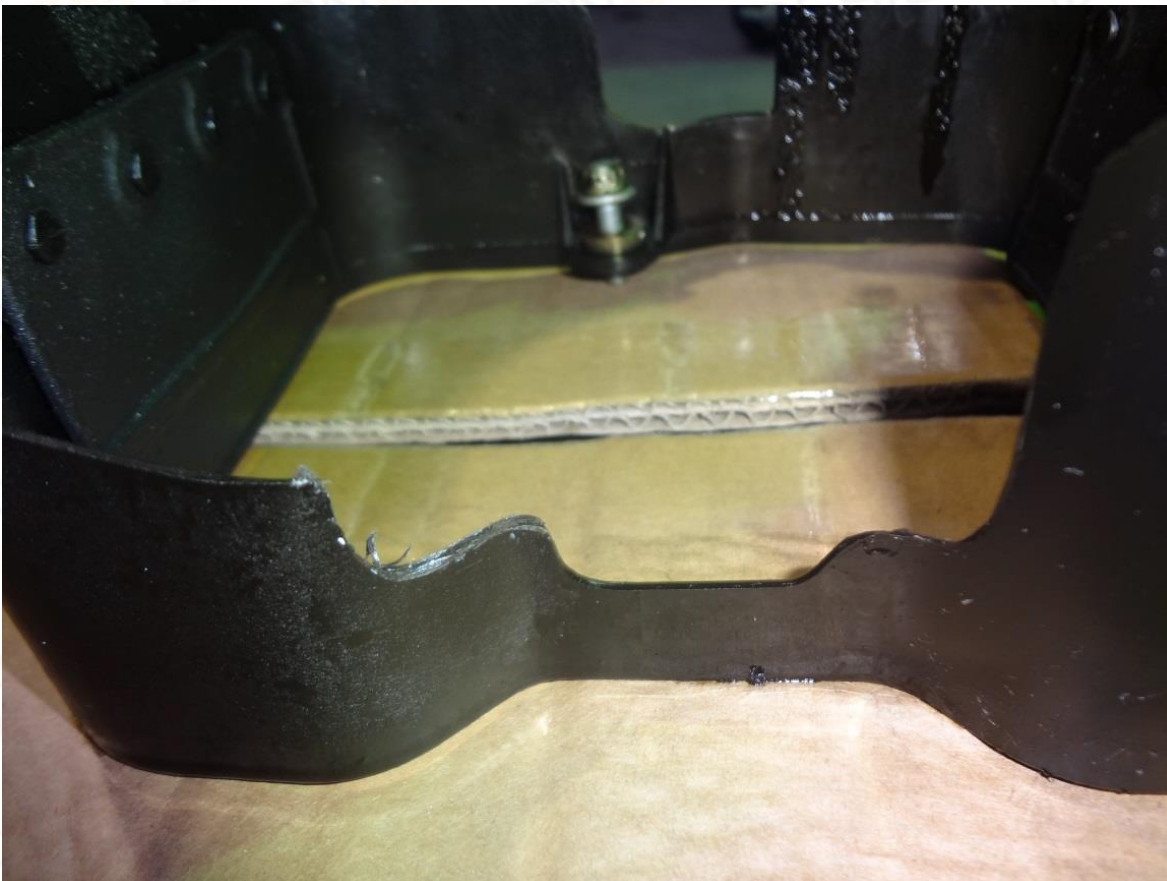


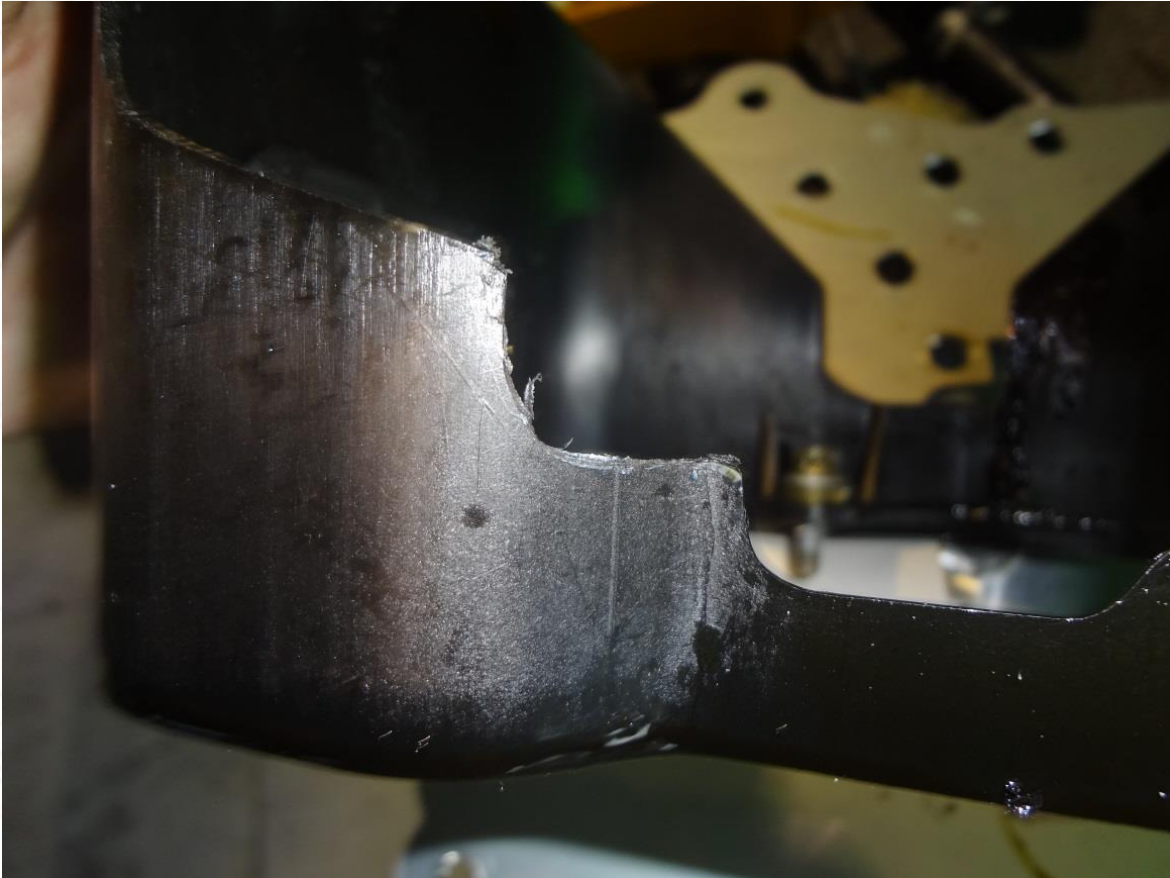
Step 6:

Install the aluminium pan baffle gasket supplied over the sealant.

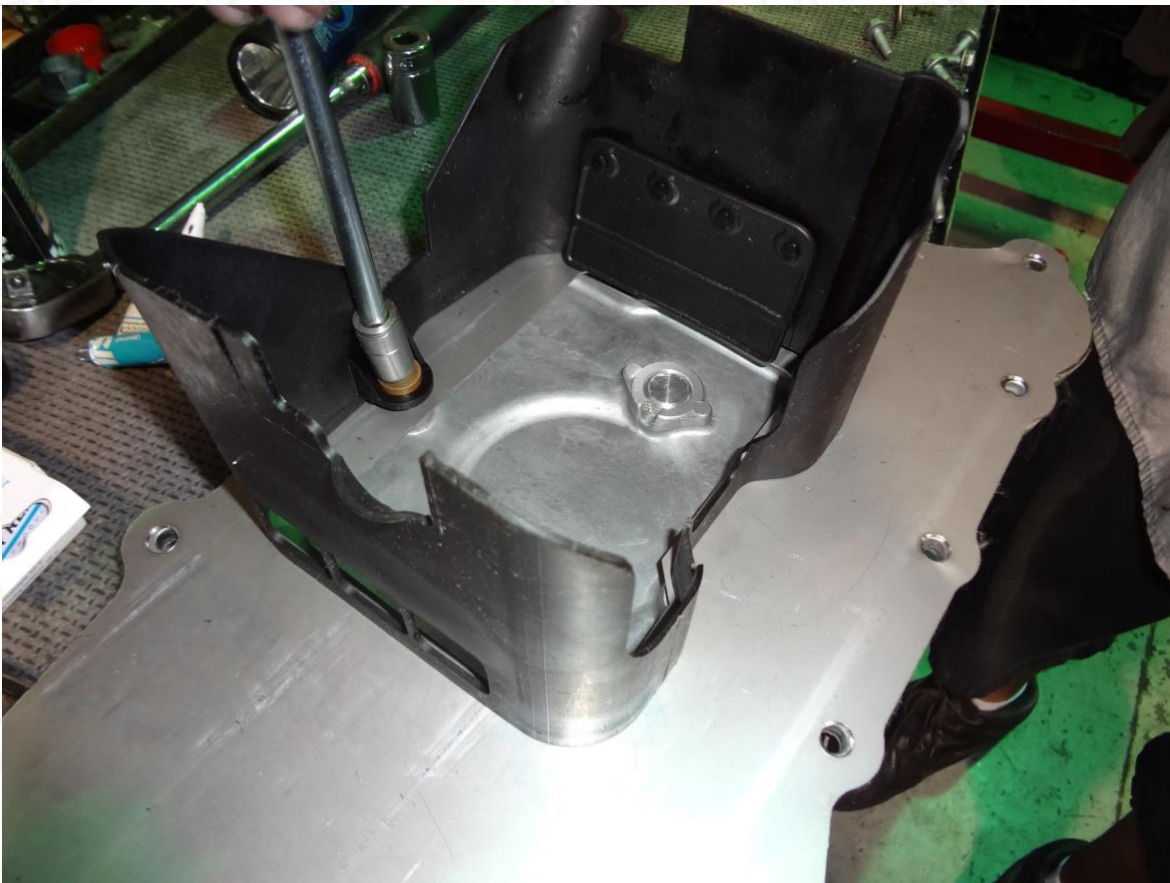


You must modify the original plastic baffle as shown.



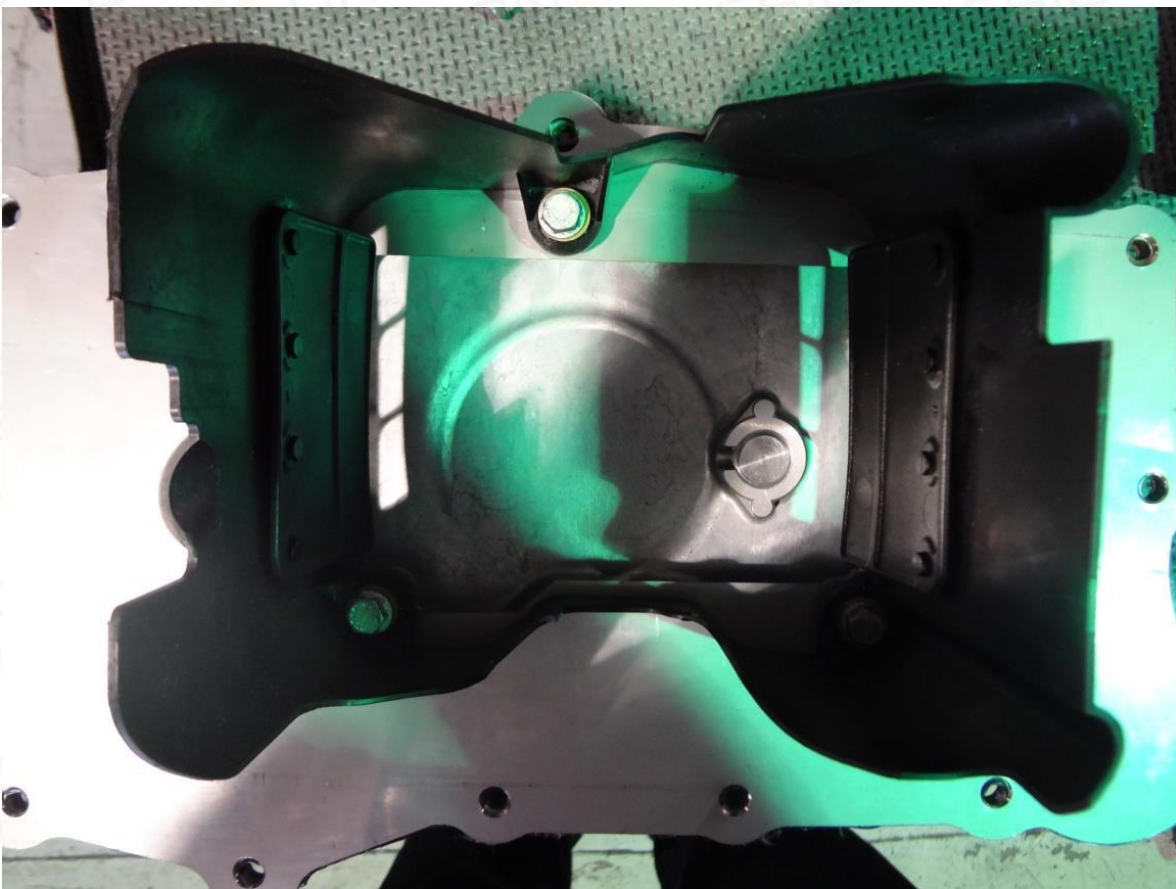
**Step 7:**

Install the original modified baffle onto the pan. Do not forget to use the three aluminium spacers provided. (shown below)



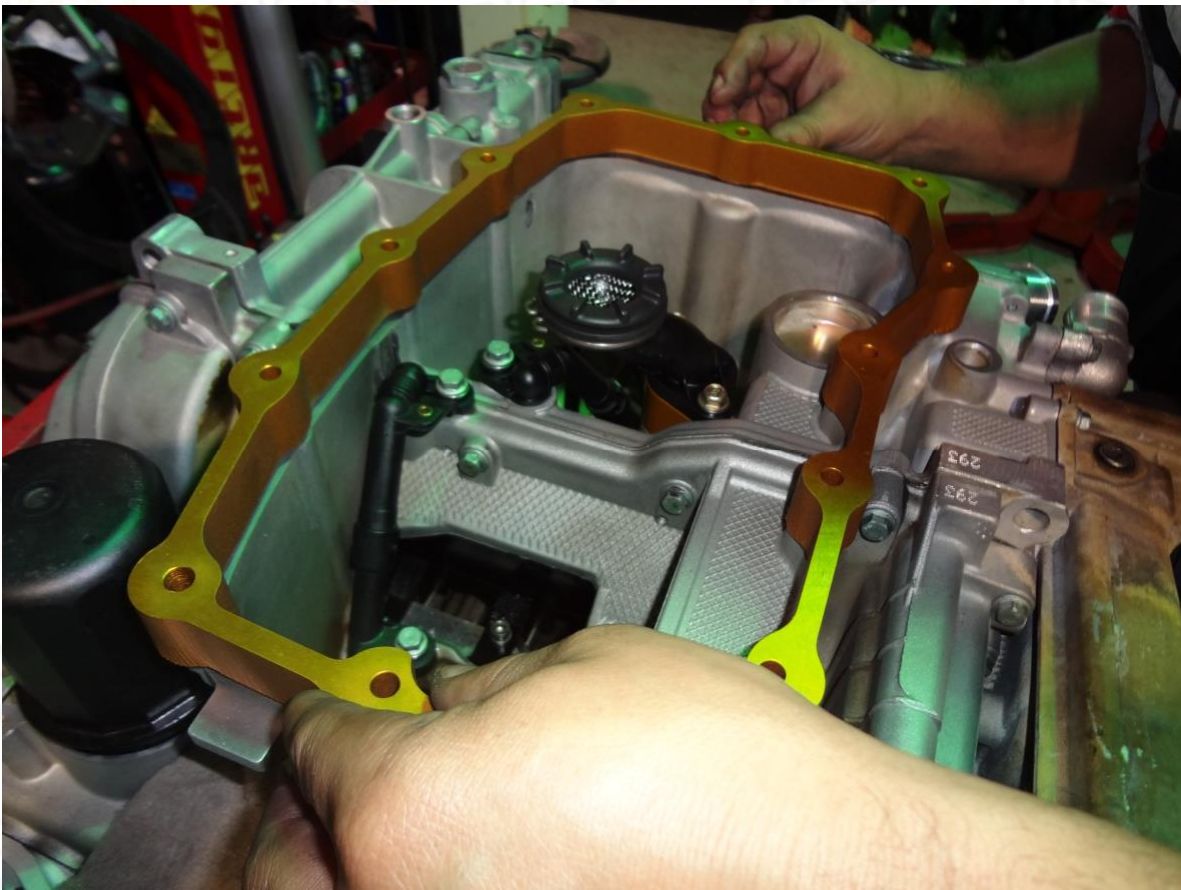


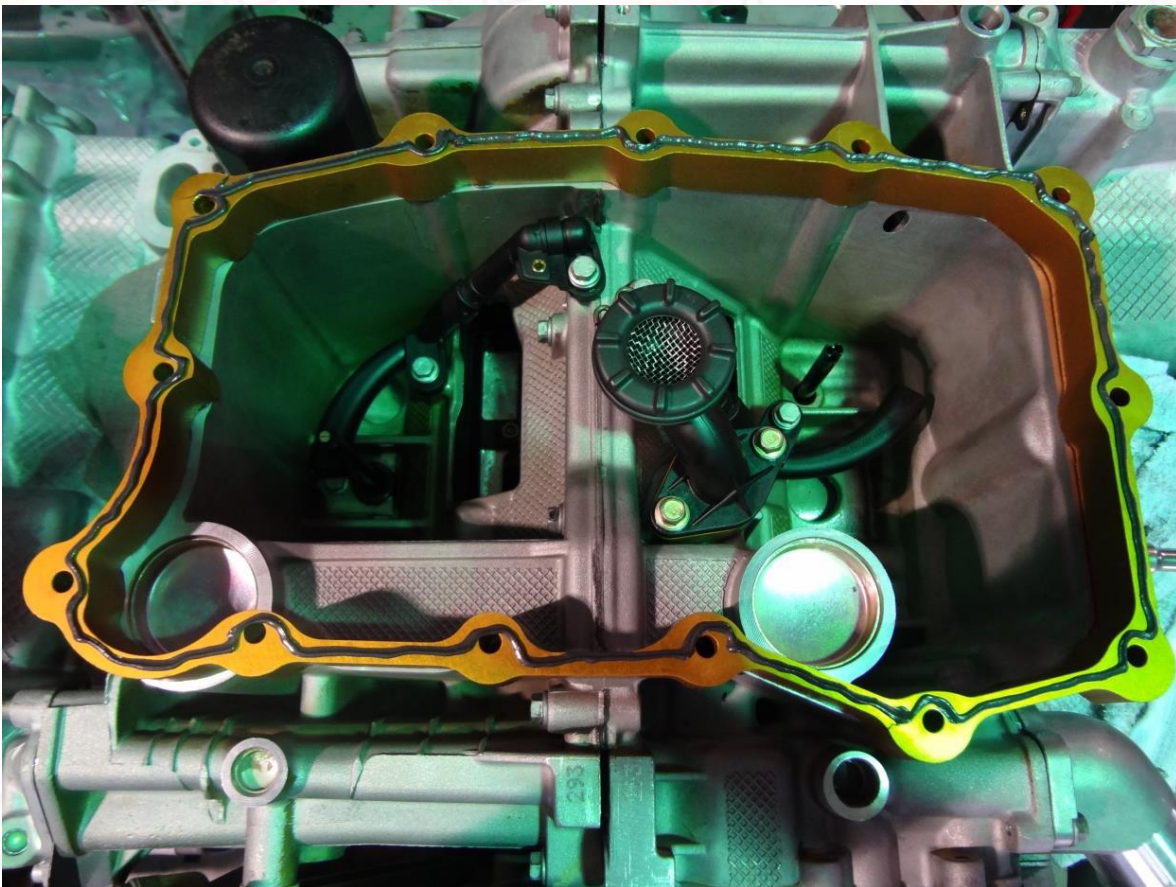
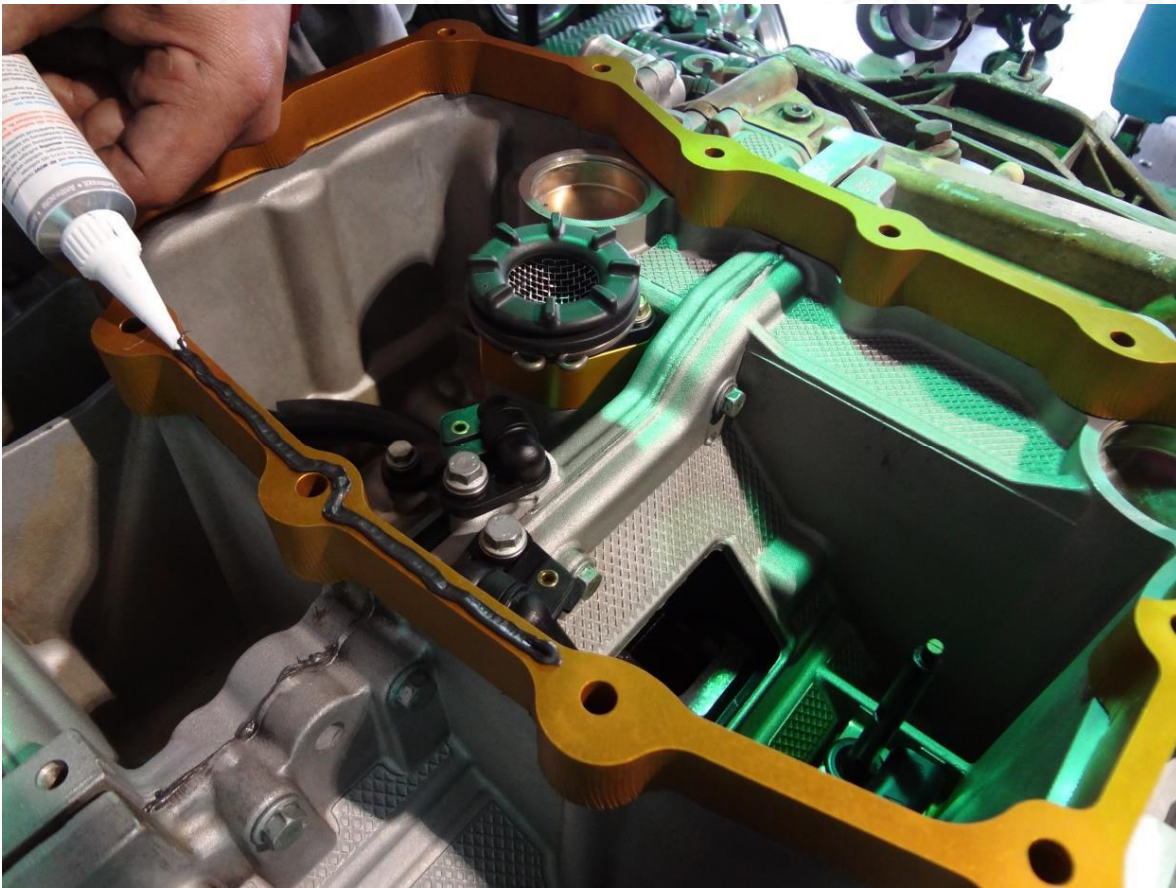
Aluminium spacer installed above.



Step 8:

Apply the Reinzosil sealant to the edge of the 2Qt aluminium pan extension. Once you have the sealant applied, attach it to the engine casting. Once the extension is attached, use the sealant again on the top section of the pan extension.





Step 9:

Place the oil pan and baffle onto the 2qt extension. Using the remaining 13 hex bolts supplied, install the pan and torque it to the proper specifications. Once you have done this, you are finished!

